

State of Wyoming Corner Record

(In compliance with the *CORNER PERPETUATION AND FILING ACT*, Wyoming Statutes, 1997, Section 33-29-140, et. seq., and the Rules and Regulations of the Board of Registration for Professional Engineers and Professional Land Surveyors)

Reverse side of this form may be used if more space is needed.

Record of original survey and citation of source of historical information (if corner is lost or obliterated). Description of corner monumentation evidence found and/or monument and accessories established to perpetuate the location of this corner. Sketch of relative location of monument, accessories, and reference points with course and distance to adjacent corner(s) (if determined in this survey). Method and rationale for reestablishment of lost or obliterated corner.

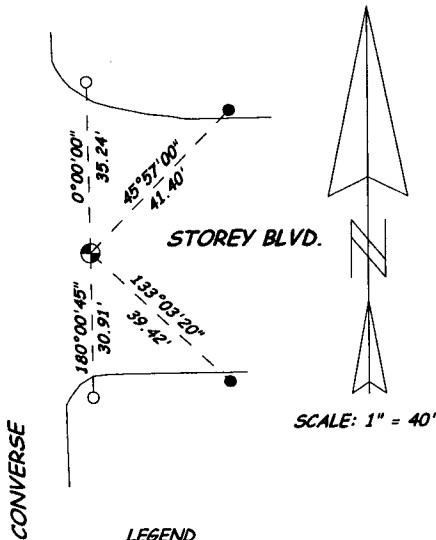
G.L.O. Record: Unknown

Subsequent Record: Wyoming Certified Land Corner Recordation Certificate filed March 16, 1990, by Mr. John A. Steil, Wyoming PLS 2500, indicating a found stone reset with 3" x 30" long aluminum pipe with 3 1/2" cap.

State of Wyoming Corner Record filed December 19, 2002, by Mr. S.D. Dawson, Wyoming PLS 555, indicating found aluminum pipe with cap as noted above.

Found: 3 1/2" diameter Aluminum Cap as noted by Mr. John A. Steil, Wyoming PLS 2500.

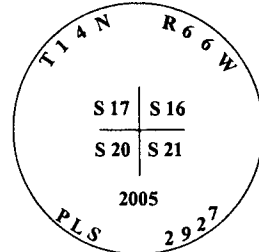
Set: On June 22, 2005, upon the completion of the Wyoming Department of Transportation Storey Boulevard and Converse Avenue Extensions final asphalt paving (W.D.O.T. Project No. 4043-00(001), at the request of the Wyoming Department of Transportation, at the corner point of the previously set monument noted above, I set a No. 5 x 24" rebar with 3 1/4" Diameter Brass Cap within a 7 1/4" diameter Surv-Kap Access Cover set below finished asphalt roadway. Brass Cap is marked as noted below. Set reference points as noted below for supplemental ties to corner monument.



LEGEND

- MONUMENT SET THIS RECORD
- 5/16" DIAMETER DRILL HOLE IN CONCRETE CURB
- 5/16" DIAMETER DRILL HOLE IN CURB IN HANDICAP AREA

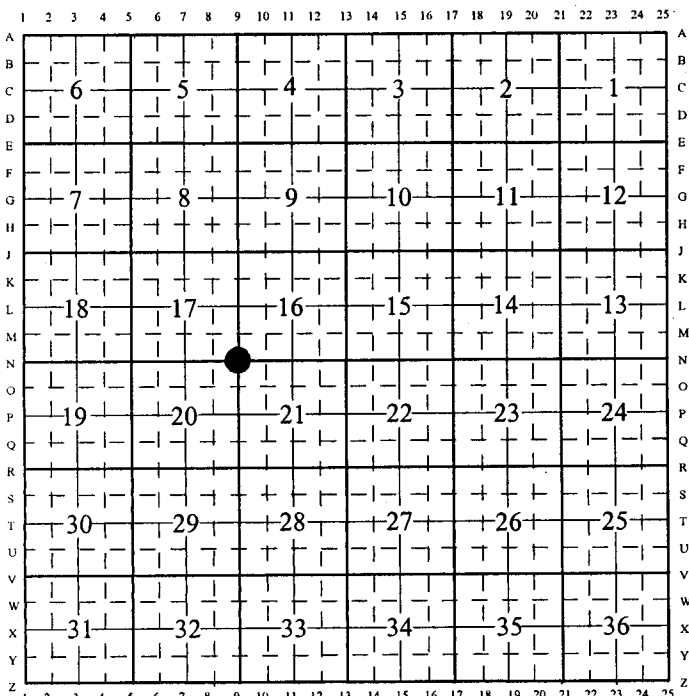
Brass Cap Markings



Date of Field Work: June 2005

Office Reference: Storey Blvd. 25993-013.00002

CROSS INDEX DIAGRAM



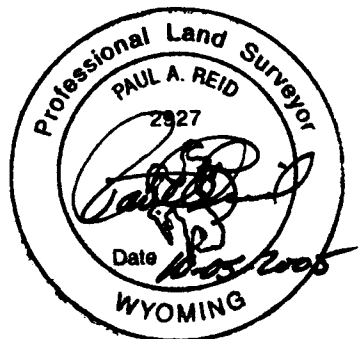
Firm/Agency, Address

Paul A. Reid, PLS
1533 Pinion Drive
Cheyenne WY 82001

307-637-3400

This corner record was prepared by me or under my direction and supervision.

SEAL & SIGNATURE



RECORDED 10/05/2005 AT 3:47 PM REC# 429381 K# 1909 PG# 1276
DEBRA K. LATHROP, CLERK OF LARAMIE COUNTY, WY PAGE 1 OF 1

Corner Name: NW Corner Section: 21 T. 14 N., R. 66 W., 6th P.M.,
SBRPEPLS/PLSW: MARCH 1994/97

Cross-Index No.: N-9